

THE VENUSIAN WHISPERING OF THE OILS

THE STORY OF THE VENUSIAN OPHIUCHUS ANOINTING OIL



SACRED WOMB OILS



Introduction

Thank you for opening this e-book!

I have worked on it with great passion and love to make each lesson as clear and structured as possible. If you resonate with the path of Venus and the Sacred Oils, having a reference guide is truly valuable, because in one hour I can never share everything I would like to. In this way, everything still finds its place.

I hope there will be students who, in their own way — or through this path — will continue to pass on the oil and the anointing process to the people around them, all over the world. You are always welcome to ask questions if something is not entirely clear.

My soul mission is to bring the Sacred Oils fully back to life — online, in ceremonies, and in everyday living

“Sacred oils were more than substances. They were vessels of divine light, carriers of wisdom, and bridges to higher realms. By reconnecting with these practices, we awaken the light codes within and remember our role as guardians of the sacred oils.”

About Me

I am Rachel, and when I first encountered sacred oils, something deep within me awakened. It was as if I was remembering something I had always known but had forgotten.

This feeling inspired me to explore this ancient practice and to share it in a way that feels accessible to my soul family, wherever you are in the world.



The oil has taken me on a profound journey, helping me understand both my personality and my soul. Through this practice, I have learned to transform old patterns, to heal wounds I didn't know I was carrying, and to bring forgotten wisdom back into my daily life. My hope is that you will do the same in your own unique way. Not my way, but your way.

This E-book is simply a tool to inspire you. Use it to learn for yourself, to develop your own practice, or even to create your own teachings. There is no one right way to work with sacred oils. What matters is that you listen to your own inner guidance and allow the oils to speak to you directly.

I want to express my deepest gratitude to my wonderful teachers who have guided me on this path Arundhati and Becca Bee. Their wisdom and patience have helped me understand the deeper layers of this sacred work. I also want to thank my beloved husband, whose constant support and encouragement have made it possible for me to follow my passion and bring this work into the world. Without them, I would not be standing here today, able to share this gift with you.

My mission is simple: to help restore the practice of sacred anointing as a powerful tool for self-healing and spiritual growth. I wish to inspire others to reconnect with themselves, with the Earth, with the rhythms of nature, and with something greater than ourselves. The oil is both my teacher and my companion on this path, and I share its wisdom so that more people can experience the peace, harmony, and love that it brings.

This book is an offering from my heart to yours. May it serve you well on your journey home to yourself.

Rachel

The Venusian Voice of the Sacred Womb Oils



What do you need?

Venus is in an Ether sign right now, this means we are making an oil that is connected to the serpent and the flame within the hearth. In other teachings I explain why each recipe is connected to an specific element, If you have questions you can look into these other teachings.

I recommend making both the masculine and feminine variant because Ophiuchus is:

Rare and very short

It embraces the masculine and feminine and brings ether



Ingredients

For this anointing oil in the element of Ether we will use:

50ml clean bottle
Castor or Jojoba Oil
what ever you prefer, you can also mix them.

Essential Oils - 2,3% dilution:

Feminine:

Myrtle 3 drops
Jasmine 18 drops
Myrrh 3 drops

Masculine:

Myrtle 3 drops
Elemi 18 drops
Myrrh 3 drops

Other:

a Candle
Incense
Music instrument

01

OPHIUCHUS OIL

THEME: *"The Path to Sovereign Mastery
through Remembrance"*

*The healing journey through the 12 elements to
the 13th gate as one whole*

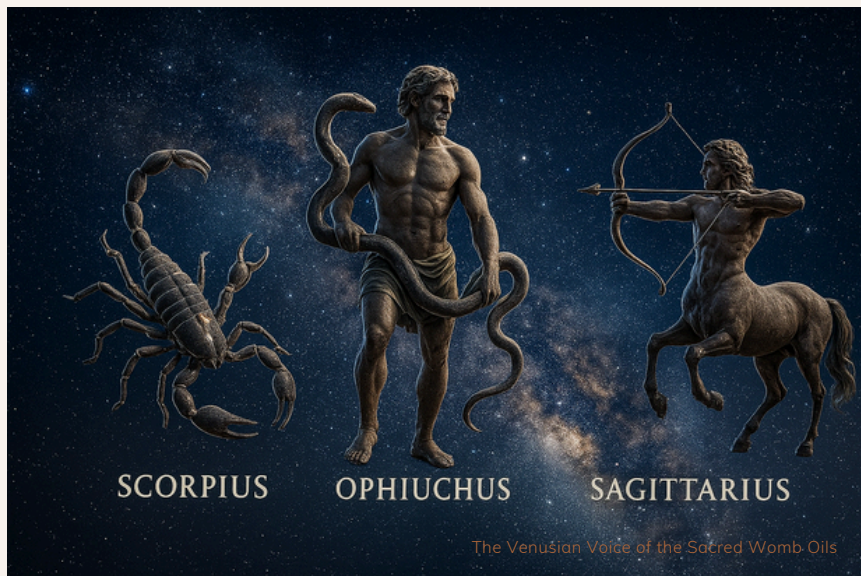
I. The Return of the Hidden Constellation

Ophiuchus was never just a thirteenth constellation.

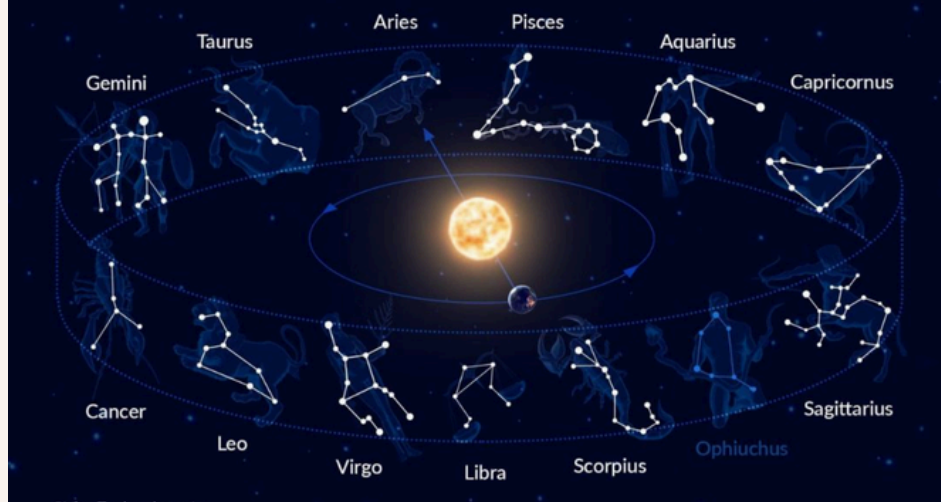
It was hidden because it elevates human consciousness to a higher level.

According to ancient classical stories, it was Zeus who placed Ophiuchus in the sky as an archetype whose pure knowledge about healing human DNA was no longer allowed to be spread on earth. This is why the thirteenth was hidden — because specific gods, higher powers, and ancient systems did not want humanity to remember its sovereignty according to Greek mythology.

Ophiuchus is that remembrance.



Wait... there are 13 zodiac constellations?



The Constellation in the Sky

Ophiuchus is a large constellation that spans the celestial equator. The name comes from Ancient Greek $\phi\iota\upsilon\chi\omicron\varsigma$ (ophioûkhos), meaning "serpent-bearer." The constellation is depicted as a man holding a serpent, represented by the neighboring constellation Serpens — which is actually divided in two by Ophiuchus: Serpens Caput (the serpent's head) and Serpens Cauda (the serpent's tail).

Ophiuchus lies between Aquila, Serpens, Scorpius, Sagittarius, and Hercules, northwest of the center of the Milky Way. The southern part lies between Scorpius in the west and Sagittarius in the east. Interestingly, Ophiuchus stands opposite Orion in the sky — when Orion dominates the winter sky, Ophiuchus hides in daylight. When Ophiuchus rises in summer, Orion descends below the horizon.

Ophiuchus represents what comes after the twelve archetypes



In True Sidereal Astrology, the Sun moves through Ophiuchus for approximately 11-18 days per year, roughly between December 2 and December 18. **When Venus transits through this area — or when she goes retrograde — she also embodies this healing serpent wisdom for 11-13 days.**

The twelve classical signs represent the cycle of humanity — the archetypes of our solar system: incarnation, growth, struggle, desire, healing, relationships, shadow, and identity. They embody the complete human experience within the wheel of incarnation.

But Ophiuchus represents what comes after the twelve: transformation and ascension. Because we are realigning the cosmic clock by mastering the 12 archetypes. Ruby dragon fields that are aligned to the diamond pillar help us with this reset in our solar system.

Source: Ascension glossary

Common Wounds That Surface in Relationships

Why was Ophiuchus erased from our memory? Why do so many people struggle spiritually with applying the 13th sign? Or why do astrologers get angry or reject every argument when the 13th sign is discussed? Because Ophiuchus brings humanity back to mastery and sovereignty. This will also be the theme of the Anointing Oil.

In the Aquarius Age, this will slowly be restored. People will remember that the zodiac is not a circle that keeps us within incarnation, but a spiral that leads us upward.

I have always wondered why Friday the 13th would bring bad luck. The day of freedom coupled with misfortune — while the number 13 has always represented luck, maturity, and mastery. Jesus was also the 13th among the 12 apostles. He brought healing and the secret message to earth — exactly what the number 13 symbolizes.

Ophiuchus is the gate outside the circle — from the wheel of repetition to the spiral of evolution.



2. The Dwapara Yuga and the Aquarius Age

We live in an age of awakening consciousness.

According to the Vedic wisdom tradition, humanity moves through cosmic cycles called Yugas — great ages that mark the rise and fall of human consciousness. There are four Yugas: Satya Yuga (the Golden Age), Treta Yuga (the Silver Age), Dwapara Yuga (the Bronze Age), and Kali Yuga (the Iron or Dark Age).

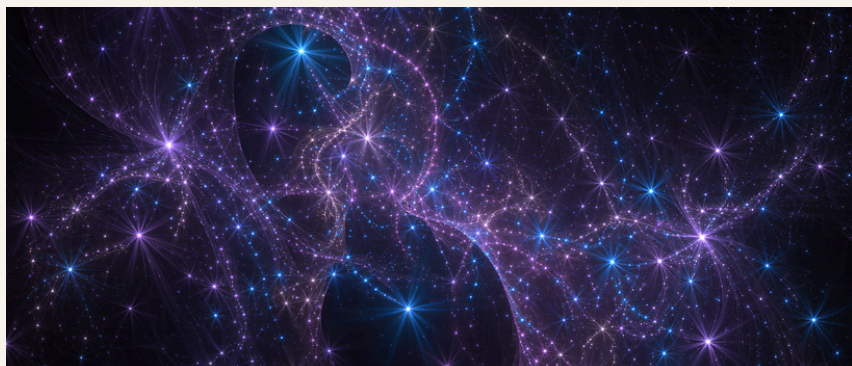
The Ascending Dwapara Yuga

According to the calculations of Sri Yukteswar — the great Indian yogi and astrologer — we are now in the ascending Dwapara Yuga, which began around 1700 AD. This is the Age of Energy — a time of awakening consciousness and rapid advancement. The dark Kali Yuga, the age of darkness, ignorance, and materialism, is behind us.

The characteristics of Dwapara Yuga:

- Great advancement in science and technology
- Understanding of energy, electricity, and atomic power
- Development of quantum physics and space travel
- Rise of psychology and consciousness studies
- Return of ancient wisdom in new forms

The etheric field of the planet is coming closer to earth. Communication, intuition, and spiritual understanding are increasing.



O2

The Aquarius Age Brings Ancient Knowledge to Light

The Aquarius Age corresponds with the Dwapara Yuga — both mark a paradigm shift in human consciousness. Where the Pisces Age was characterized by hierarchy, dogma, and blind devotion, the Aquarius Age brings direct experience, individual sovereignty, and the restoration of forgotten wisdom.

Ophiuchus is now returning

This is precisely why Ophiuchus is now returning. The knowledge that was suppressed for thousands of years — about healing, DNA activation of seed races, serpent wisdom, and the 13th gate of mastery — is coming back online. The Myrrhophores, the sacred oil bearers, are being remembered. The wisdom of the priestesses is slowly returning to the knowing field of humanity.



True Sidereal Astrology: From Confirmation to Growth

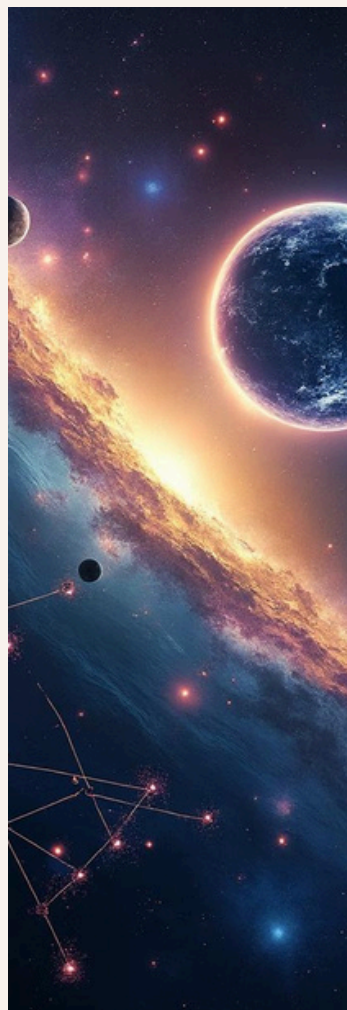
"When I ask astrologers why they don't want to switch to True Sidereal, the answer is often: 'My current personality astrology fits so well.' But here lies exactly the problem. Tropical astrology confirms the patterns we are already stuck in — it holds up a mirror of our personality as it is now, not as it could grow."

If we only keep confirming the old, there will be no progress.

""When I first saw my True Sidereal chart, I didn't understand it. It didn't match who I thought I was. But that's exactly the point: True Sidereal doesn't show what you already know — it shows where growth should be. It points to your higher potential, not your comfort zone." For me this means I am now a Aries AC instead of Taurus.

Tropical astrology confirms your ego. True Sidereal activates your soul.

Thanks to modern technology and accurate astronomical software, we can now see exactly where the planets and stars really are. This is not interpretation based on ancient scrolls or passed-down traditions — these are measurable, verifiable positions that any astronomer can confirm.



NASA Recognizes the 13th Constellation

In 2016 and again in 2020, NASA confirmed what astronomers have known for centuries: the Sun moves through 13 constellations, not 12. NASA stated: "When the Babylonians created the constellations 3000 years ago, they chose to leave out a 13th sign. So we did the calculations."

The Babylonians knew about Ophiuchus. They chose to leave it out to fit their 12-month calendar.

The Sun is in Ophiuchus for approximately 18 days each year (from November 29 to December 18). This is not a discovery — it is a remembrance. The 13th constellation has always been there, waiting to be recognized again.

What has changed is that science and spirituality are now beginning to speak the same language.

Astrologers who use True Sidereal are taken seriously by astronomers because their system is based on actual celestial mechanics — not on symbolic interpretations.

The separation between "science" and "wisdom" is beginning to heal, as intended according to the teaching of the 7 rays.



The separation between "science" and "wisdom" is beginning to heal, as intended according to the teaching of the 7 rays.

why the astrological signs no longer correspond with the constellations

Due to the precession of the equinoxes — the slow tilt of the Earth's axis over a cycle of approximately 25,920 years — the point where the Sun stands during the equinoxes gradually shifts through the constellations. This is why the astrological signs no longer correspond with the constellations they are named after.

The December point of the solstice will enter the constellation Ophiuchus around the year 2269 — the cosmic confirmation of what is already awakening in consciousness now.

But we don't have to wait. The energy of Ophiuchus is now available for those willing to receive her. This is the promise of the Dwapara Yuga and the Aquarius Age: what was hidden is revealed. What was suppressed returns. What was forgotten is remembered.

The 13th gate is opening. Are you ready to enter?



why the astrological signs no longer correspond with the constellations

The ancient cosmic pattern:

Silver Gate (Orion) → descent into form

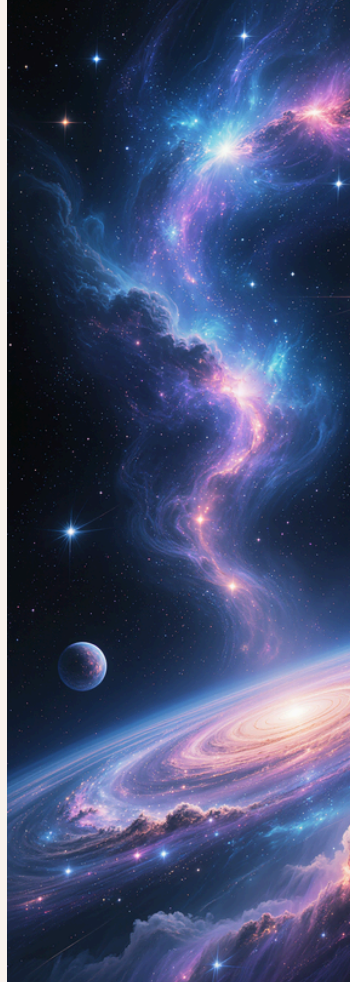
Golden Gate (Ophiuchus) → awakening from form

Humanity travels thousands of years through the 12 signs until the soul matures — and Ophiuchus comes online.

Ophiuchus contains a unique combination of energies:

- House 8 — shadow, death, sexuality, transformation, rebirth
- House 9 — truth, wisdom, expansion, cosmic law, higher knowledge

It creates a passage between Scorpio (water) and Sagittarius (fire) — the realm beyond illusion, trauma, and compromise.



The Golden Gate and the Galactic Center

Ophiuchus dissolves manipulation, distortion, and psychic interference, strengthens sovereignty and discernment, and restores the Law of One — everything is divine and one consciousness in countless forms.

According to esoteric teachings, the first feminine and masculine energies incarnated in the Lyra star system as divine reptilian-christos beings in perfect harmony between feline fields, dragon and angelic plasma fields, and light architecture. Some teachings call them the Sofhir or serpent of wisdom.

Their body was feline, their essence christos, their lineage serpent. Divine Women carried healing and creative power; men carried knowledge. Together they mastered staff & scepter — sacred sexuality, sovereignty, and divine power and mastery. Their incarnation point on Earth was from Sirius A, origin of the oldest priest-priestess lineages.

Sagittarius and Scorpio Point the Way

The Ophiuchus field is precisely coded: Sagittarius aims his arrow at the Golden Gate of Ophiuchus — he signals the path to the Source.

Scorpio points with his tail to the same gate — he reminds us that true transformation goes through shadow and death-of-the-old.

The path through Ophiuchus means:

- Seeing traumas without merging with them
- Softening the ego without losing power
- Letting your old story die to be reborn as light
- Becoming the master of the serpent — where Scorpio awakens Kundalini, Ophiuchus controls it all the way to the crown, this will also embody the power of the oil



03 Mythology of Ophiuchus and Sagittarius

Ophiuchus is Asclepius — the healer who could raise the dead. In Greek mythology, Ophiuchus represents Asclepius, son of Apollo and the greatest healer who ever lived. According to Greek mythology. He learned his art from a serpent — when he saw how a serpent brought another serpent back to life with healing herbs. Asclepius became so powerful that he could even raise the dead.

His teacher was Chiron

the wise centaur — the archetype of the "wounded healer" who transforms his own suffering into healing for others. Chiron was later placed by Zeus in the starry sky as Sagittarius, while Chiron's student Asclepius was placed as: Ophiuchus.



✓ The Serpent Master Through History

The archetype of the Serpent Master appears in all civilizations:

- Sumerian — Enki — creator-god, water, wisdom, DNA repair
- Egyptian — Imhotep — high priest, physician, astrologer, architect of the cosmos
- Greek — Asclepius — miracle healer, serpent on the staff, resurrection
- Hebrew — Joseph — dream interpreter, protector of life, wisdom
- Aztec — Quetzalcoatl — feathered serpent, bridge between heaven and earth
- Maya — Kukulcan — ascending serpent, activation of consciousness

Why Ophiuchus Was Forgotten

When Asclepius became so powerful that he could raise the dead, Hades (god of the underworld) complained to Zeus. If humans no longer died, the power of the gods would diminish.



Zeus struck Asclepius down with a lightning bolt. He placed him in the starry sky — but made sure the knowledge would be forgotten. This pattern repeated throughout history: the 13th sign was removed, the number 13 became "bad luck," the serpent was declared an enemy, and the Myrrhophores (sacred oil bearers) were persecuted as witches.

But now, in the Aquarius Age, Ophiuchus is returning. The 13th gate is opening. The wisdom of healing, DNA activation, and human sovereignty is awakening again. This is fantastic for the ceremonial anointing oils.

✓ The 13-Code and the Elevation of Humanity

Ancient traditions coded the 13:

- Jesus + 12 disciples → 13 at the table
- Ra + 12 helpers in the solar boat
- Horus on the throne before the 12
- Isis finds 13 pieces of Osiris
- Tarot Arcanum XIII — Death → Rebirth
- The Maya: 13 cosmic segments on the turtle's back

The 12 are archetypes of human experience. The 13 unites all parts into one self-aware being. Ophiuchus is the Ether Element = the master of the 12.



The Serpent as Sacred Symbol

The serpent was originally never malevolent. Her power is healing. The serpent is the power of regeneration, resurrection, and life stream. Serpents were connected with healing because they shed their skin every year — symbolic of shedding the old self.



The serpent power is called:

- Kundalini Shakti (India)
- The Uraeus (Egypt)
- The Caduceus (modern medicine)
- The Serpent of the Cross (Essenes)

In the esoteric interpretation of Genesis, the serpent did not whisper disobedience to Eve — but remembrance. The serpent reminded Eve that God was not outside her but lived in her DNA.

Ophiuchus restores this archetype to its original truth.

The Serpent as Sacred Symbol



✓ Other Mythological Identifications

Besides Asclepius, ancient sources connected Ophiuchus with other figures. The ancient Greeks saw it as the god Apollo who wrestled with a huge serpent that guarded the Oracle of Delphi. Later myths identified it with Laocoön, the Trojan priest who warned his people about the Trojan Horse and was later killed by sea serpents sent by the gods.

In medieval Islamic astronomy (10th century), the constellation was known as Al-Ḥawwa' — "the serpent charmer."

Christian astronomer Caesius gave the title Aaron to Ophiuchus — referring to Moses' brother whose staff became a serpent before Pharaoh. All embody the same template — the inner healer, liberator, and transformer.



The 12-12 Gate: Resetting the Cosmic Clock

The 13th sign pulls humanity out of density and the spiral of ascension opens itself ever more clearly for humanity. In the 13th chakra lies the NoMe seed, an original blueprint that overwrites all the old. So that we remember again that we are one consciousness.



The 12-12 gate of Ophiuchus:

- Resets the cosmic clock in our body, where we have been stuck on old timelines through beliefs
- Activates Wisdom Codes in our DNA as intended for the Seed Races
- Shifts timelines back to correct structure and 5D consciousness
- Opens the core crystals of DNA memory, so that we remember who we really are. Through meditation and initiations.

Hygiea — The Serpent Healer of Ophiuchus

✓ Hygiea, daughter of Asclepius (from whom we derive the word "hygiene"):

- Removes and heals what does not belong to you
 - Steps out of the tail of Scorpio and dismantles the illusion of separation
 - Kills what resists truth — not as destruction, but as liberation
- For those attached to identity, this gate feels like dying. For those who are ready, it feels like coming home and remembering what one always knew.

Her teaching:

- Light and dark are limbs of the same body
- All twelve are faces of one consciousness
- Everything is one heartbeat



O4

The Oils



Ta
Ve
So
Re
th
on

JA
Queen of the Night

ed
as

3-Gate and
Path to
Journey
13th gate as

Activator |

Jasmine is the flower of the night. We also call her the Queen of the Night.

Jasmine opens the etheric field and the womb gate. She is closely connected with Venus and she helps you look inward when the time is ripe. The wisdom of the Oils says she is very special for the ether element.

The Queen of the night

Jasmine can only be harvested at night under the moon between 00:00 and 05:00, when her scent is strongest because the veil is thin. While the world sleeps, while most flowers close their petals and wait for dawn — Jasmine opens.

She thrives in the dark. She finds her power in the void. She navigates through the darkness with her white flowers and leads us to find silence and embrace it.

Her name is also "moonlight in the garden" because she scents strongly especially at night. She functions as a symbol of hope in darkness, and love for others — she leads you out of the darkness and her sweet scent brings happiness.

Venus, Aphrodite and the Divine Feminine

Jasmine is connected with Venus and Aphrodite, resonating with the energy of love, lust, beauty, and spiritual enlightenment. She is often associated with unconditional love and the energy of the Divine Feminine. Her essence is nurturing, soft, and heart-opening.

Venus retrograde goes deep within. Jasmine helps you look inward when the time is there, and guides you through the deeper layers of self-reflection and transformation.



Venus — The Higher Code of the Moon

Jasmine is connected with Venus — the higher octave of the moon, symbolizing intuition, mystery, and enlightenment. Where the moon reflects the emotional body, Venus elevates this to a higher level of love and wisdom.



Emotional Healing and Shadow Work

Jasmine oil is a powerful emotional healer, helping to release old traumas, grief, and fear. She helps release emotions and dark shadow thoughts, she helps you gain self-confidence.

Jasmine was also used to honor the dead, just like the Rose.

Protection and Dreamwork

In many spiritual traditions, Jasmine is believed to protect against negative energies and purify the aura. She helps you connect with the spiritual realm and is an ally, offering protection for dreamwork, channeling, and astral travel.

Since ancient times, Jasmine has been a bridge between the divine and the Earth. She is the perfect oil for anointing and blessing in ceremonies and rituals. She is the bridge to go deep within and find your higher frequencies.

Magic and Prosperity

In spells, she is used to attract luck, fortune, and prosperity. She is the perfect oil for anointing and blessing in ceremonies and rituals.

Be careful: men may want to enter your space more when you wear this scent, because she unites energies.

This is a sign of the power of Jasmine to bring masculine and feminine energies together — the Sacred Marriage that also manifests in the combination with Elemi.

05

ELEMI — The Masculine Activator



Elemi has a legendary power as a bridge between Heaven and Earth.

Elemi is the vertical pillar of the body, the inner father who provides safety, direction, and structure. It was widely used in ancient Egypt and in the embalming process. It was used to anoint kings and provide magic.

Preparation

Elemi was one of the best-kept secrets for those who knew how to work with it, think of the right medicinal dose of serpent venom.

The name Elemi comes from the Arabic "al-lami" and means "above and below" — a reference to the Hermetic principle "As above, so below." This symbolizes the ability to balance both the physical and spiritual realms.

The Sacred History of Elemi

Elemi belongs to the Burseraceae family — the same botanical family as Frankincense and Myrrh. It is sometimes called "the younger sister of Frankincense" because of their shared chemistry and spiritual symbolism. The resin comes from the *Canarium luzonicum* tree, native to the Philippines, where it grows up to 30 meters tall in tropical rainforests.

The Sacred History of Elemi

In ancient Egypt, Elemi was used in the embalming process for mummification — to help the soul transcend to the next realm of existence. In Philippine culture, Elemi resin was used by shamans and healers in rituals for protection, healing, and energetic cleansing. It was seen as a spiritual bridge serpent venom — anchoring individuals while allowing them to connect with higher realms. Elemi is known as the "resin of light".

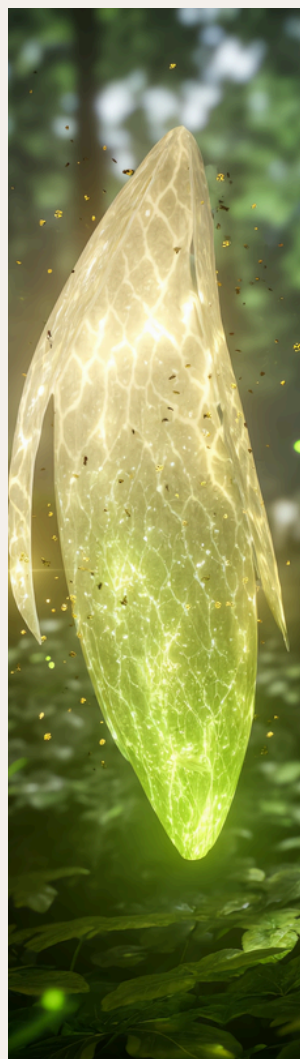
Spiritual and Energetic Properties

Venus (ether) goes deep within for 11 days. The high vibration of Elemi helps to clear mental fog and open the mind to higher consciousness and enlightenment. The aroma helps calm the mind, allowing one to receive divine messages and inner wisdom more clearly. Often associated with rebirth and renewal, Elemi oil supports the release of old patterns and invites new beginnings.

Elemi supports:

- A deeper understanding of the Rasha body, also known as original 12-strand DNA blueprint
- Overcoming the fear of death and embracing surrender
- Deep connection with ancestral lineage and wisdom
- Guides you to the depths of darkness and silence to find wisdom
- Stepping into the unknown, removing doubts and fears
- New beginnings and major life transitions

Elemi brings the crown and root chakras into balance. Therefore, it helps us reveal how we can balance our spiritual life with our earthly existence. It also opens the solar plexus and heart chakra, with a special affinity for the heart chakra.



Master the Zodiac with your Ally Elemi

Elemi is used in the constellation Ophiuchus which is aligned with the King Cobra — who asks for your respect for the deep underworld and teaches how to navigate back to the 7 higher heavens.

Elemi is "the bridge" — a closely guarded secret for traveling between Earth and higher realms. She is the spirit in the forest, your sacred ally that whispers softly how to heal yourself and master the ether.

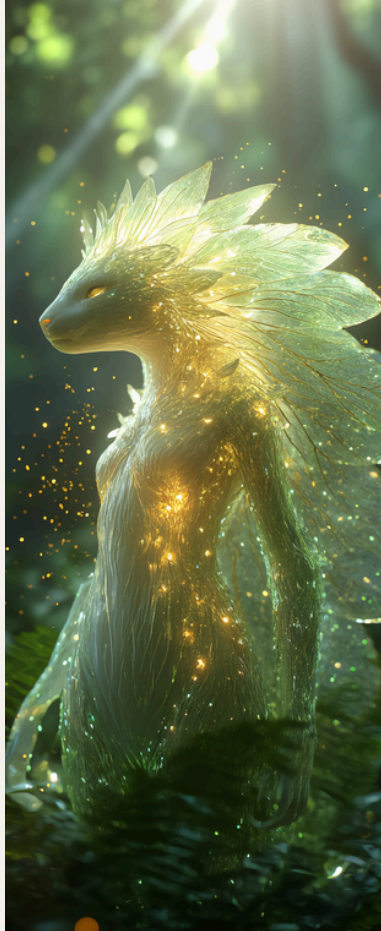
The Cobra that heals with Elemi

You will experience a deep transition period of 11 days in Ophiuchus that will shift and change your life, dreams, or way of thinking.

Only when Venus goes retrograde or when she is in Ophiuchus do we use Elemi. That is why it has a very special place on my shelf. I always make some extra, like a 100ml bottle, because it is so rare to make. Venus does not go retrograde every year, and Ophiuchus is only represented for 11 days per year between Scorpio and Sagittarius.

In ancient times, Spikenard (Nardus) was used for this purpose, the oil from the scrolls. But our etheric bodies now have a different frequency in this Aquarius Age. Therefore, we now use Elemi for most souls.

Yeshua was blessed and anointed by Mary before his crucifixion, to enter the deep transmission period that was to come. He received help from the Spikenard — which has now changed to Elemi to match our current frequencies.



06 Venus in Ether: Dates 2025 - 2035

While the meditation journey connects you with Below you will find all dates when Venus embodies the Ether element — both during her passage through Ophiuchus and during her retrograde periods. These are the moments to make and use the Ophiuchus oil.

Date	Sign	Days	Type
Dec 12, 2025	Ophiuchus ♃	10	13th Gate
Oct 2, 2026	Virgo RX ♍	42	Retrograde
Jan 20, 2027	Ophiuchus ♃	11	13th Gate
Nov 12, 2027	Ophiuchus ♃	10	13th Gate
May 9, 2028	Taurus RX ♉	44	Retrograde
Dec 16, 2028	Ophiuchus ♃	10	13th Gate
Oct 20, 2029	Ophiuchus ♃	12	13th Gate
Dec 15, 2029	Sagittarius RX ♐	41	Retrograde
Nov 26, 2030	Ophiuchus ♃	10	13th Gate
Jul 19, 2031	Leo RX ♌	28	Retrograde
Aug 3, 2031	Cancer RX ♋	15	Retrograde
Jan 9, 2032	Ophiuchus ♃	11	13th Gate
Oct 28, 2032	Ophiuchus ♃	11	13th Gate
Feb 25, 2033	Pisces RX ♛	43	Retrograde
Dec 11, 2033	Ophiuchus ♃	10	13th Gate
Sep 28, 2034	Virgo RX ♍	41	Retrograde

Source: Prometheus Software 2025 — True Sidereal Astrology. Dates calculated for Amsterdam local time (CET/CEST).

07

When the Serpent Reaches the Crown

When the Kundalini fully activates:

- Time begins to shift, you may sometimes see blurry, or not know what you were doing, or have an ethereal experience during your day
- Synchronicities accelerate, telepathy, white magic
- Dreams and reality merge
- Intuition becomes crystal clear
- Trauma loses its power more and more through self-insight
- Light and dark are transcended by sattva, the neutral energy
- Unity consciousness becomes a state of being

The Great Integration

In the 13th Gate:

- Masculine and feminine interweave
- Cosmic splits are healed
- The light stream activates
- All fragments realign or return to the Source

Ascension does not take place outside the body — but within the body, in the crystalline memory of the cell.



ODE TO ELEMI — My Invocation to You

Beloved Elemi,

Masculine Activator and Guardian of my spine,
you are the sacred bridge between Heaven and Earth.
You align my body as a vertical pillar
and remind me of inner mastery.

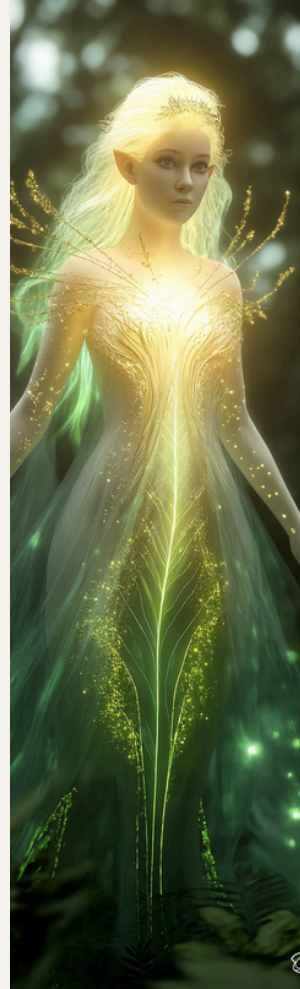
You, who anointed kings, and unlocked magic,
bear your name al-lami — as above, so below.
Sister of Frankincense,
hidden guardian of the 13th sign.

you supported the souls in Egypt
to enter the next realm,
and how shamans used you
as protection, healing, and purification.

Elemi, open my Rasha body,
let my original 12-strand blueprint remember.
Connect me with the Elohei feline serpent line,
Bring my crown and root into balance
so that the Naga can do her sacred work.

Under Ophiuchus you let my dreams,
my thinking, and my life direction shift.
Where Spikenard once prepared,
you are now the activator of Aquarius —
the oil that seals my new beginning.

Elemi, I speak to you,
I honor you,
I receive you,
activate me through your sacred fire.



ODE TO JASMINE — My Invocation to You

Feminine Activator of Ether, Mistress of Rod & Staff

Beloved Jasmine,

Feminine Activator of Ether,
mistress of the Rod and the Staff,
you who let the masculine and feminine in me
merge into one sacred stream.

Your scent is alchemy.
and mastery of the Naga serpent begins.

Jasmine, you are the serpent power
that moves through darkness without fear.
in which true transformation takes place.
Under Venus you lead me inward,

to the place where the feminine principle
remembers its authority,

You are the bridge to the mystical,
to dreams that carry instructions,
to inner worlds
so that the masculine in me can serve
and the feminine in me can lead.

Melt my inner self into one line,
one stream,
one body of wisdom.

Jasmine, I honor you,
I call you,
I receive you.

Let your sacred unification awaken in me.

Anointing — Ophiuchus Activation

we are calibrating our cosmic clock
in our cellular core crystals.

The Ruby Dragons help us
to set this clock right again
and give power to the restoration
of the cosmic Father and Mother
principle,
so that both come into balance in us
again within the divine feminine.

May the wisdom of the sacred
Naga-Dragon fields
give us pure instructions:
from the 22D Father field,
the 23D Mother field,
and the 24D Christ field,
flowing through our kundalini
as intended within the Emerald
covenant of free will.

That we with this oil correct
our inner blueprint in the Ether field
with the pure Diamond Sun
align to perfection—
without interference from thoughts,
desires, or cravings.

That we fully trust
that our Monad, through our soul,
knows exactly what it must do,
and that we can fully surrender to this
within the field of Ether



Repeat these sacred phrases three times
if it resooates:

Ah-Yah-Dhan-RU A'-pet MhE-Ta

(Separation from God is but an illusion)

**Ah-VA Ah-Dha-MHen...Esh'ta-A ah-
Teu-en**

(Eternal unity is the only eternal divine
truth existing)

OM OM OM



Mastery Reflection Journal

Answer the questions below honestly for yourself. Put an ✕ next to each question you answer "yes" to.

The category with the most crosses shows you where your growth lies — not as judgment, but as an invitation. These are the patterns that are ready to be seen, acknowledged, and transformed.

When you are ready:

Take the Ophiuchus oil in your hands. Close your eyes. Bring the oil to your nose and breathe deeply.

“

Set your intention in the oil: focus on the category where you recognized the most. Don't ask for it to be taken away — ask for mastery. The power to see this pattern without disappearing into it. The courage to make a new choice.

Anoint yourself. Your wrists. Your heart. Your forehead.

Then open your journal and write. Let the insights flow without censorship. What comes up? Where does this pattern come from? How did it once protect you — and what does it cost you now?

Mastery - Ophiuchus serpents

As you heal your inner world, you will naturally notice your outer world becoming more peaceful. You can accelerate this process by being conscious about the energy you bring to each interaction.

Patterns in Relationships (Libra)

- ☐ Do you often say yes to others when you actually mean no — to be liked?
- ☐ Do you adjust yourself in company so you're not "too much" or stand out?
- ☐ Do you keep attracting the same type of partner/friend who ultimately disappoints you?
- ☐ Do you give more than you receive — and find it difficult to ask for help?
- ☐ Do you feel responsible for others' moods or feelings?

Control & Pressure (Gemini)

- ☐ Do you have trouble delegating tasks because you think you do it better and faster yourself?
- ☐ Do you fill your calendar so full that there's no room left to stand still?
- ☐ Do you notice you become restless when you have nothing to do for a moment?
- ☐ Do you mentally prepare for the worst so you can't be disappointed?
- ☐ Do you feel like everything falls apart if you don't pay attention for a moment?

Self-Worth & Recognition (Leo)

- ☐ Do you need external validation to believe you've done something well?
- ☐ Do you often compare yourself to others — and come up short?
- ☐ Do you only feel valuable when you achieve something or are useful to someone?
- ☐ Do you find it difficult to accept compliments without downplaying them?
- ☐ Are you harder on yourself than you would ever be on someone else?

Boundaries & Self-Loss (Virgo)

- ☐ Do you take over others' problems as if they were your own?
- ☐ Do you feel guilty when you take time for yourself?
- ☐ Do you feel guilty when you say no?
- ☐ Do you notice you no longer know what you actually want — apart from what others expect of you?
- ☐ Do you say sorry for things you don't need to say sorry for?
- ☐ Do you swallow irritations until one day you explode or completely shut down?

Avoidance & Distraction (Aries)

- ☐ Do you reach for food, your phone, social media, or wine when you feel restless?
- ☐ Do you prefer talking about others rather than what's going on inside you?
- ☐ Do you keep it "cozy" to avoid deeper conversations?
- ☐ Do you notice you walk away from situations as soon as they become emotional?
- ☐ Do you quickly fill silences because they feel uncomfortable?

Old Pain & Family Patterns (Cancer)

- ☐ Do you sometimes react more intensely than the situation calls for — and not know why?
- ☐ Do you hear yourself saying things your parents also always said?
- ☐ Do you carry a burden that isn't yours — but from your mother, father, or ancestors?
- ☐ Do you feel responsible for your parents' or family's happiness?
- ☐ Do you feel like you always have to prove you're good enough?

Victimhood & Responsibility (Pisces/Taurus)

- ☐ Do you wait for someone else to change before you can feel better?
- ☐ Do you notice you keep repeating the same complaints without changing anything?
- ☐ Do you blame circumstances or others for where you are now?
- ☐ Do you feel powerless over your own life — as if it just happens to you?
- ☐ Do you often say "I can't help it" or "that's just who I am"?

Closing questions: Which pattern do you recognize the most — and how long have you been doing this? What would change if you broke through this pattern?

The Commitment to Yourself

Now comes the most important part: the daily commitment to remember. Knowledge without practice remains theoretical. Understanding without application does not create transformation. You must choose, again and again, to show up for yourself.

Your Daily Anointing process

This means anointing yourself daily, even when it feels silly or unnecessary. This means meditating regularly, even when your mind resists stillness. This means journaling about your old patterns, even when the insights are uncomfortable.

There will be days when you forget. Days when you fall back into old patterns of blame, victimhood, or separation. This is normal. This is part of the process. The question is not whether you will stumble. The question is: Will you get back up? Will you return to your practice? Will you choose remembrance once again?



The Ripple Effect

As you heal your relationship with yourself, as you remember your wholeness, as you anchor your soul more fully into your physical body, you become a beacon of light for others.

A Final Blessing

May you remember, every single day, that you are a divine being having a temporary human experience.

May you maintain your sacred connection to Source, no matter how chaotic the external world becomes. This is the path of Ophiuchus.

Not healing by fleeing from your patterns, but by seeing and integrating them fully. Not fighting your shadow, but getting to know her as a lost part of yourself.

May your relationships become mirrors of love rather than mirrors of fear. May your environment grow quieter as your inner world grows more peaceful. May you know, in the depths of your being, that you are already whole, already perfect, already loved beyond measure.

And may you always remember: Separation from God is but an illusion. Eternal unity is the only eternal divine truth existing.

With so much love,

Rachel